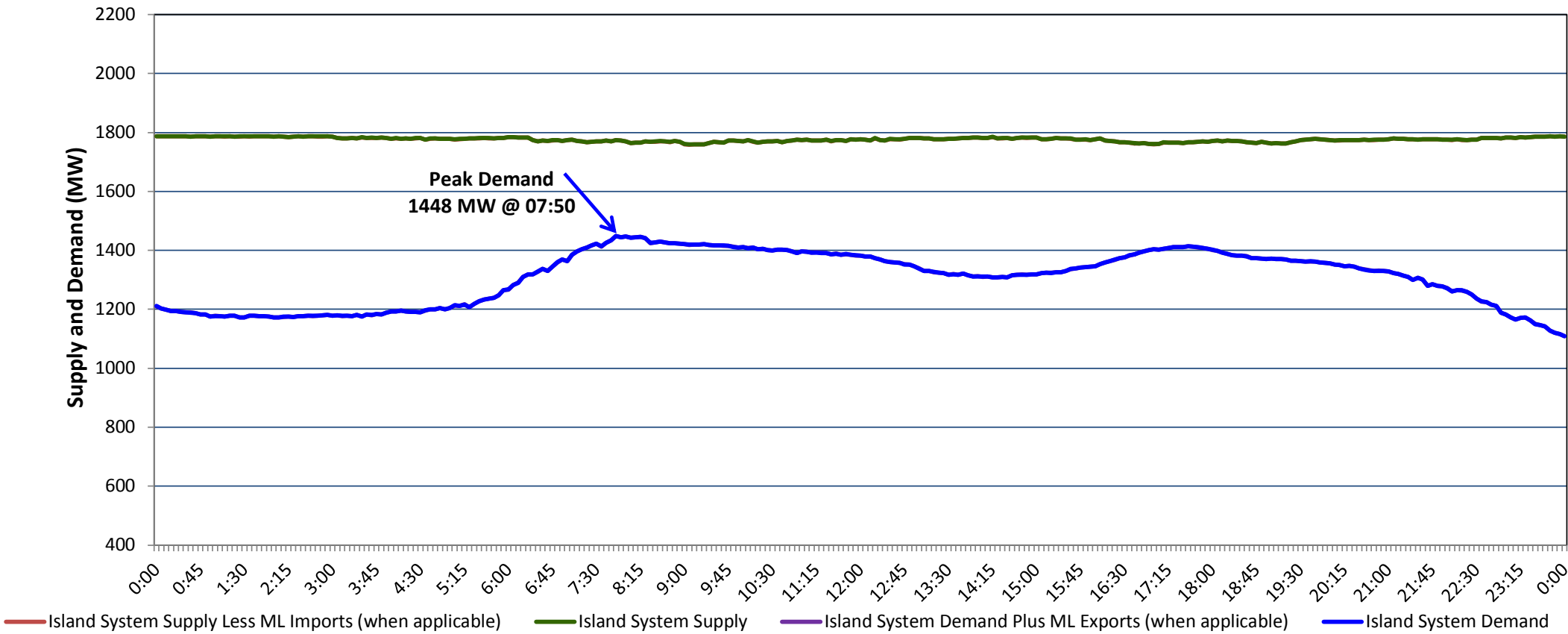


Newfoundland Labrador Hydro (NLH)  
Supply and Demand Status Report Filed Friday, February 02, 2018

Section 1  
Island Interconnected System Supply, Demand & Exports  
Actual 24 Hour System Performance For Thursday, February 01, 2018



Supply Notes For February 01, 2018

- 1,2
- A

As of 2115 hours, January 04, 2018, Stephenville Gas Turbine available at 25 MW (50 MW).
- B

As of 1916 hours, January 20, 2018, Holyrood Unit 1 unavailable 140 MW (170 MW).
- C

As of 1144 hours, January 22, 2018, Holyrood Unit 3 available at 115 MW (150 MW).
- D

As of 0855 hours, January 23, 2018, St. Anthony Diesel Plant available at 8.85 MW due to planned outage (9.7 MW).
- E

At 0844 hours, February 01, 2018, Holyrood Unit 2 available at 135 MW (170 MW).

Section 2  
Island Interconnected Supply and Demand

Fri, Feb 02, 2018		Island System Outlook <sup>3</sup>	Seven-Day Forecast	Temperature (°C)		Island System Daily Peak Demand (MW)	
				Morning	Evening	Forecast	Adjusted <sup>7</sup>
Available Island System Supply: <sup>5</sup>		1,765 MW	Friday, February 02, 2018	4	6	1,290	1,135
NLH Generation: <sup>4</sup>		1,425 MW	Saturday, February 03, 2018	-1	-8	1,565	1,456
NLH Power Purchases: <sup>6</sup>		130 MW	Sunday, February 04, 2018	-10	-4	1,510	1,396
Maritime Link Imports:		- MW	Monday, February 05, 2018	-1	5	1,425	1,317
Other Island Generation:		210 MW	Tuesday, February 06, 2018	3	-2	1,430	1,322
Current St. John's Temperature & Windchill: 6 °C		N/A °C	Wednesday, February 07, 2018	-4	-3	1,475	1,367
7-Day Island Peak Demand Forecast:		1,565 MW	Thursday, February 08, 2018	1	7	1,355	1,130

Supply Notes For February 02, 2018

- 3
- F

At 0130 hours, February 02, 2018, Bay d'Espoir Unit 5 unavailable due to planned outage (76.5 MW).
- G

At 0130 hours, February 02, 2018, Bay d'Espoir Unit 6 unavailable due to planned outage (76.5 MW).
- H

At 0651 hours, February 02, 2018, Bay d'Espoir Unit 5 available (76.5 MW).
- I

At 0651 hours, February 02, 2018, Bay d'Espoir Unit 6 available (76.5 MW).

- Notes:
1.

Generation outages for running and corrective maintenance are included. These are not unusual for power system operations. They generally do not impact customer supply. The power system operators schedule outages to system equipment whenever possible to coincide with periods when customer demands are low and sufficient supply reserves are available. However, from time to time equipment outages are necessary and reserves may be impacted.
2.

Due to the Island System having no synchronous connections to the larger North American grid, when there is a sudden loss of large generating units some customer's load must be interrupted for short periods to bring generation output equal to customer demand. This automatic action of power system protection, referred to as under frequency load shedding, is necessary to ensure the integrity and reliability of system equipment. Under frequency events typically occur 5 to 8 times per year on the Island Interconnected System and the resultant customer load interruptions are generally less than 30 minutes.
3.

As of 0800 Hours.
4.

Gross output including station service at Holyrood (24.5 MW) and improved NLH hydraulic output due to water levels (35 MW).
5.

Gross output from all Island sources (including Note 4).
6.

NLH Power Purchases include: CBPP Co-Gen, Nalcor Exploits, Rattle Brook, Star Lake, Wind Generation, Vale capacity assistance (when applicable).
7.

Adjusted for CBP&P, Vale and Praxair interruptible load, Maritime Link Exports and the impact of voltage reduction (when applicable).

Section 3  
Island Peak Demand Information  
Previous Day Actual Peak and Current Day Forecast Peak

Thu, Feb 01, 2018	Actual Island Peak Demand <sup>8</sup>	07:50	1,448 MW
Fri, Feb 02, 2018	Forecast Island Peak Demand		1,290 MW

- Notes:
8.

Island Demand / ML Exports (where applicable) is supplied by NLH generation and purchases, plus generation owned and operated by Newfoundland Power and Corner Brook Pulp & Paper (Deer Lake Power, DLP).